

# Environmental Department



Specialised groups of experts deal with environment protection in connection to the energy sector, local communities and the state. The development and research activities of the department focus on the protection, preservation and enrichment of the natural capital, on economic resource management and low-carbon economy, as well as on protection against environmental pressures and risks for the health and well-being of people.

Our experts carry out environmental and expert studies, model assessments, expert opinions and reports on implemented measurements, advise in demanding administrative procedures, offer technical consultation services, supervise existing devices that impact the environment and develop new methodologies in environment protection and environmental impacts assessment.

By considering the established verification procedures and quality assurance as well as by using environmental information systems or accredited methods and procedures according to SIST EN ISO/IEC 17025 and SIST EN ISO/IEC 17020 standards, the experts ensure control of environmental conformity.

## ENVIRONMENTAL AND EXPERT STUDIES

Experts consider the importance of identification and management of environmental and social risks in all phases of electric power facilities, from planning to their termination of operation.

The current know-how about environmental impacts of engineering or production facilities and other interventions have been upgraded with environmental sensitivity models that consider data about the introduced special protection aspects, environmental and spatial features that can on a certain area present an important natural, spatial, environmental or social asset.

The mentioned approach enables the integration of public incentives with regard to sustainable environment management and enables the introduction of dialogue with stakeholders in spatial planning process. Achieving an agreement between state authorities and local communities, the civil society and individuals is of key importance for achieving acceptable solutions, resulting in environmentally acceptable options for everyone.



[www.eimv.si](http://www.eimv.si)

## APPLIED WORK IN ENVIRONMENT PROTECTION ENCOMPASSES

### ► The preparation of environment-related expert documents:

- environmental reports,
- environmental impact reports,
- environmental sensitivity analyses,
- expert studies for including the public in intervention planning procedures,
- assessments of acceptability of intervention in the local environment,
- managing procedures for obtaining environmental consents,
- managing procedures for obtaining environmental consents,
- cooperation with device managers, administrative authorities and civil society.



### ► The preparation of environment-related expert documents:

- consultations and cooperation in administrative procedures,
- the implementation of the Aarhus Convention into the spatial planning procedures,
- project feasibility analyses.

### ► The consideration of environmental quality parameters:

- operational monitoring,
- environmental impacts modelling,
- the supervision of measurement systems,
- the provision of measurements.

### ► The consideration of the input of substances and energy in the environment:

- initial measurements (the authorisation of the ministry competent for the environment),
- operational monitoring (the authorisation of the ministry competent for the environment),
- the supervision of measuring systems (the authorisation of the ministry competent for the environment),

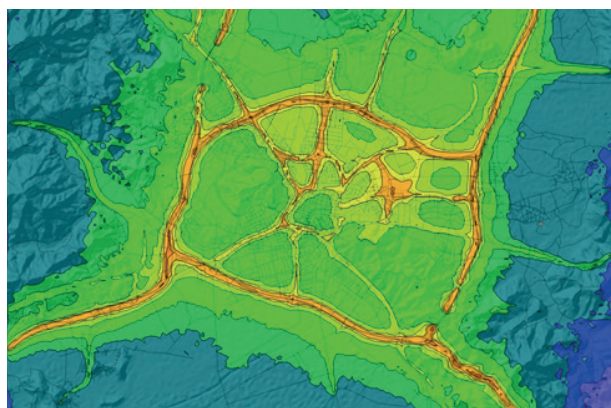
- the assessment of the quantity of substance input in the environment,
- the provision of measurements.

### ► Information technologies:

- OIS – the information system for consistent validation and supervision of the operation of measuring equipment,
- iRMS – IT system for measuring equipment management,
- online support to environmental activities.

### ► Research and development:

- studies in environmental protection, the development of new methodologies for environmental impacts assessment,
- the development and implementation of emission records,
- development scenario projections,
- the assessment of environmental quality parameters,
- recommendations for an active inclusion in legislative procedures,
- the preparation of documents for environmental rehabilitation and the improvement of environmental conditions,
- designing the principles for rational prevention,
- the development of e-mobility concepts.



Cumulative impact of air pollution with dust particles from traffic and major industrial plants in Ljubljana

## OPEN DIALOGUE

Honest thinking and ethics are values that can help us understand the importance of dialogue. We can often not avoid different interests in spatial planning, therefore, it is important to respect and understand the opinion of all interested parties. This is a special challenge because we have to objectively assess and consider various standpoints and interests. Appropriate solutions can be achieved through open dialogue by considering the opinion of others which is the only way to reach acceptable environmental solutions.



ELEKTROINŠTITUT MILAN VIDMAR

Hajdrihova 2, 1000 Ljubljana, Slovenia

Tel.: +386 1 474 36 01, e-mail: info@eimv.si